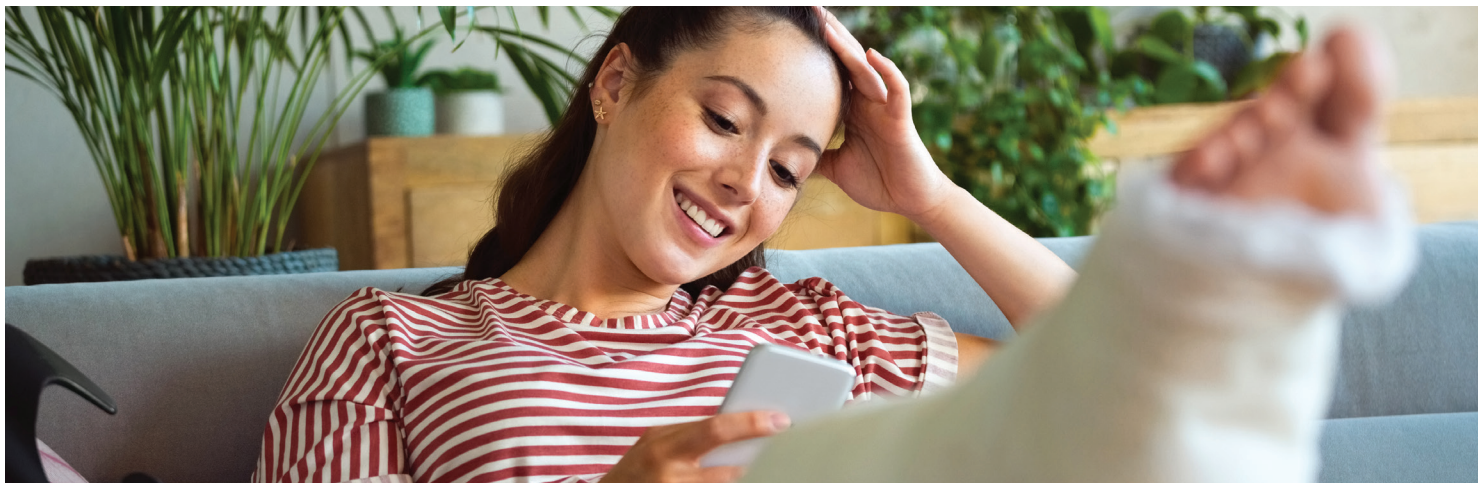


Whatever life throws at you throw it our way. Employee Assistance & Wellness Support.

Life: just when you think you've got it figured out, along comes a challenge. Whether your needs are big or small, New York Life Group Benefit Solutions is there for you with our Employee Assistance & Wellness Support program¹. It can help you and your family find solutions and restore your peace of mind. This is just another example of how we are committed to Putting Benefits To Work For PeopleSM.



Our suite of value-add resources includes:

› Employee Assistance Program¹

Are you feeling overwhelmed by the demands of balancing work and family life? Maybe you have questions about a legal or financial concern. You and your family members now have access to various counseling services including legal, financial, and work-life balance assistance. All counseling calls are answered by a Master's or PhD-level counselor who will collect some general information and will discuss your needs. The Employee Assistance Program provides a maximum of three in-person or virtual sessions, per issue, per year.

› **GuidanceResources^{®1}** When you need information quickly to help handle life's challenges, you can visit [guidanceresources.com](https://www.guidanceresources.com) for resources and tools on topics such as health and wellness, legal regulations, family and relationships, work and education, money and investments, and home and auto. You will also have access to articles, podcasts, videos, slideshows, on-demand trainings and "Ask the Expert" which provides personal responses to your questions.

› Well-being Coaching¹

Sometimes you may need help with personal challenges and physical issues that can be overwhelming. To help you achieve your goals, you will have access to a certified coach who will work with you, one on one, to address health and well-being issues such as burnout, time management and coping with stress. You have access to five sessions per year. All sessions are conducted telephonically.

[See additional information on next page ›](#)



› **FamilySource**^{®1}

Managing the everyday concerns of home, work and family can be difficult. To help resolve those concerns, you have access to family care service specialists that provide customized research, educational materials and prescreened referrals for childcare, adoption, elder care, education, and pet care.

Contact Info:

**Employee Assistance and
Wellness Support 24/7**



Phone: (800) 344-9752



Website: guidanceresources.com

Web ID: NYLGBS

1. These programs are NOT insurance and do not provide reimbursement for financial losses. Some restrictions may apply. These services are provided exclusively by ComPsych[®] Corporation. Customers are required to pay the entire discounted charge for any discounted products or services available through these programs. Some services are available at the option of the employer for an additional cost. Programs are provided through third party vendors who are solely responsible for their products and services. Full terms, conditions and exclusions are contained in the applicable client program description and are subject to change. Program availability may vary by plan type and location and are not available where prohibited by law. These programs are not available under policies issued by New York Life Group Insurance Company of NY.

FamilySource and GuidanceResources are registered trademarks of ComPsych Corporation.

All programs are effective for the member/participant on the first day of coverage.

New York Life Group Benefit Solutions products and services are provided by Life Insurance Company of North America or New York Life Group Insurance Company of NY, subsidiaries of New York Life Insurance Company.

Life Insurance Company of North America is not authorized in NY and does not conduct business in NY.

New York Life Insurance Company

51 Madison Avenue
New York, NY 10010

© 2022, New York Life Insurance Company. All rights reserved. NEW YORK LIFE, and the NEW YORK LIFE Box Logo are trademarks of New York Life Insurance Company.

123741 0822 SMRU 1951110 Exp. Date 09.08.2024